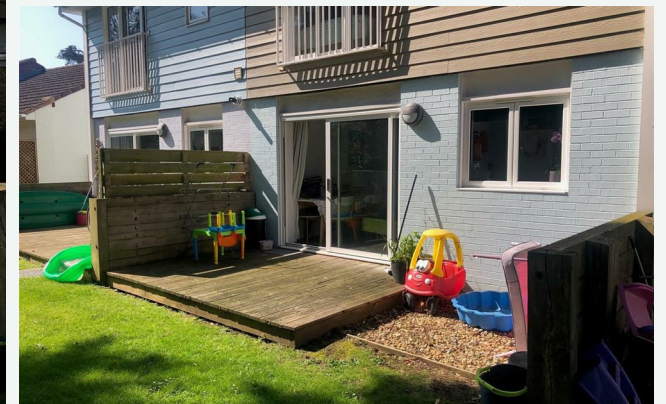


SPENCE WILLARD



Whitfield P2 Halletts Shute, Norton, Yarmouth, PO41 0RJ

VIEWING
YARMOUTH@SPENCEWILLARD.CO.UK 01983 761005
WWW.SPENCEWILLARD.CO.UK

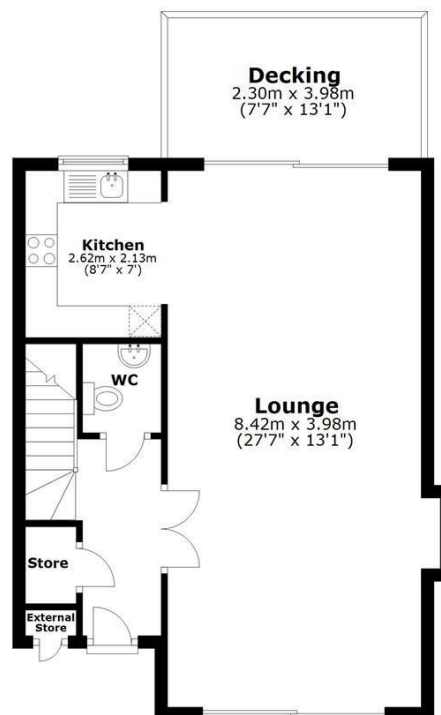
Perfect for five-six guests, this three bedroom cottage offers a new owner the opportunity for a wonderful and conveniently located cottage, close to parking with a fabulous outlook and secluded rear garden terrace. Offering excellent family accommodation, the cottage is generously proportioned, designed to maximise space and well equipped.

The ground floor comprises a large open plan sitting room/diner kitchen with double doors opening out onto terraces/decks on both sides of the house. There is a ground floor w.c with wash basin and plenty of storage. On the first floor there are three bedrooms and a well equipped family bathroom. This house has plenty of natural light.

Leasehold 125 years from 2006/7

Ground Floor

Approx. 59.3 sq. metres (638.1 sq. feet)



First Floor

Approx. 45.5 sq. metres (489.5 sq. feet)



Total area: approx. 104.8 sq. metres (1127.6 sq. feet)

SKETCH PLAN FOR ILLUSTRATIVE PURPOSES ONLY
All measurements, walls, doors, windows, fittings and appliances, sizes and locations are approximate only. They cannot be regarded as being a representation by the seller, nor their agent.

Plan produced by www.drawmeafloorplan.co.uk, part of Valerien Property Services Ltd.
Plan produced using PlanUp.

Whitefield P2, The West Bay, Yarmouth PO41 0RJ

SPENCEWILLARD.CO.UK

IMPORTANT NOTICE: 1. Particulars: These particulars are not an offer or contract, nor part of one. You should not rely on statements by Spence Willard in the particulars or by word of mouth or in writing ('information') as being factually accurate about the property, its condition or its value. Neither Spence Willard nor any joint agent has any authority to make any representations about the property, and accordingly any information given is entirely without responsibility on the part of the agents, seller(s) or lessor(s). 2. Photos etc: The photographs show only certain parts of the property as they appeared at the time they were taken. Areas, measurements and distances given are approximate only. 3. Regulations etc: Any reference to alterations to, or use of, any part of the property does not mean that any necessary planning, building regulations or other consent has been obtained. A buyer or lessee must find out by inspection or in other ways that these matters have been properly dealt with and that all information is correct. 4. VAT: The VAT position relating to the property may change without notice.